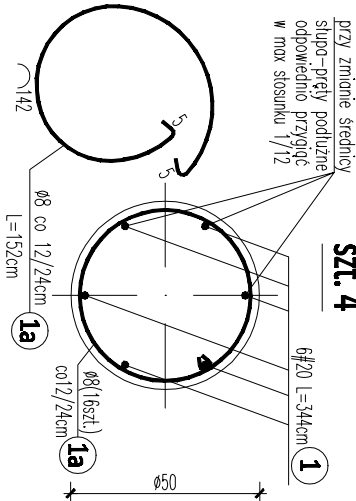


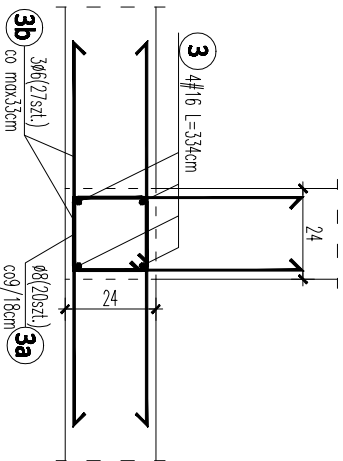
Poz.15.1 - h=248cm

szt. 4



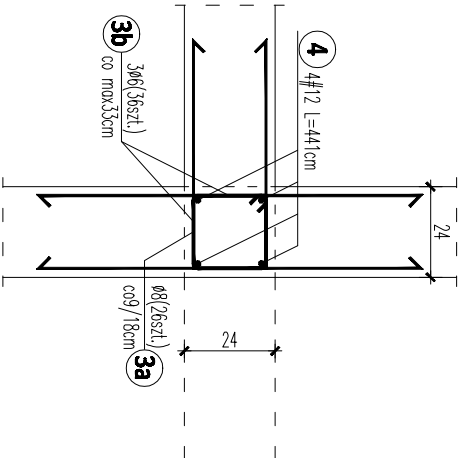
Poz.15.3.1b - h=248/254cm

szt. 2



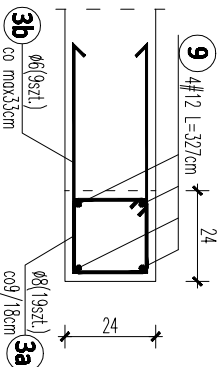
Poz.15.4.1d - h=368cm

szt. 1



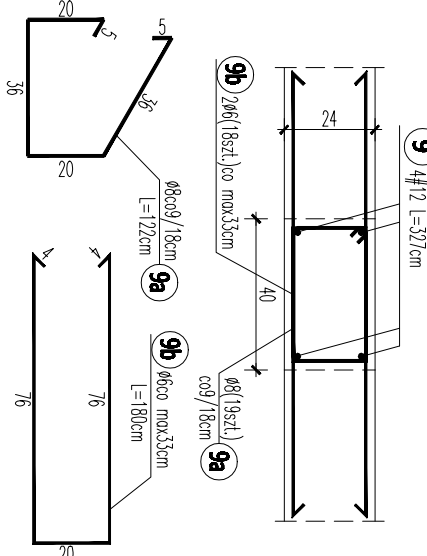
Poz.15.4.5 - h=248/254cm

szt. 1



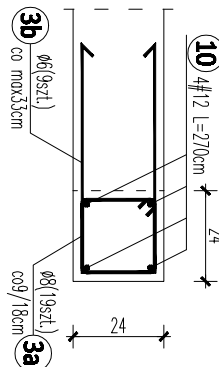
Poz.15.4.6 - h=248/254cm

szt. 1



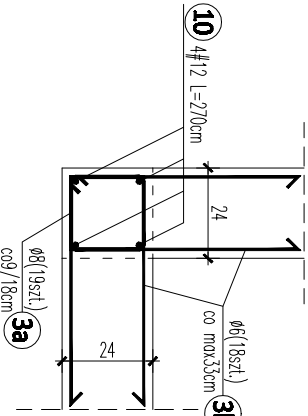
Poz.15.4.5a - h=248cm

szt. 2



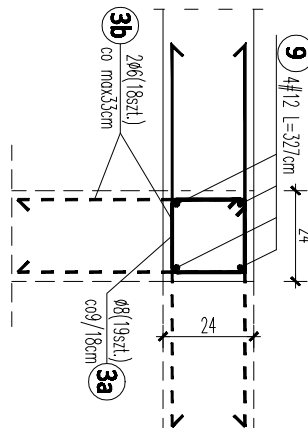
Poz.15.4.7a - h=248/254cm

szt. 2



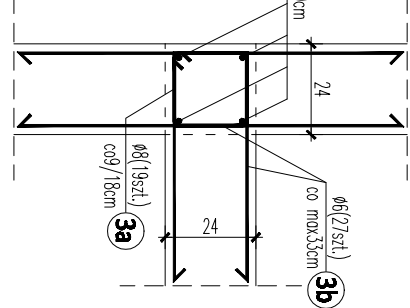
Poz.15.4.5b - h=248/254cm

szt. 5



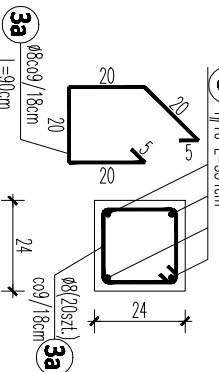
Poz.15.4.7b - h=254cm

szt. 2



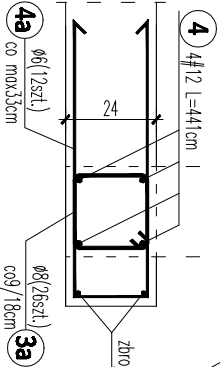
Poz.15.3.1a - h=248/254cm

szt. 4



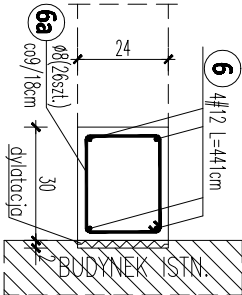
Poz.15.4.1c - h=368cm

szt. 1



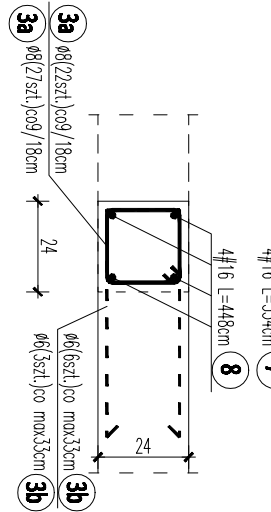
Poz.15.4.4a - h=254cm

szt. 1



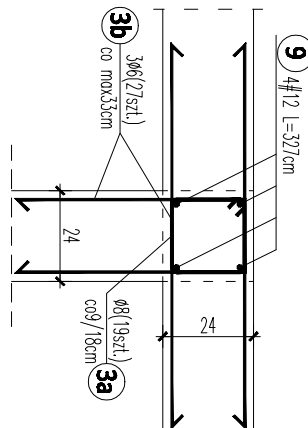
Poz.15.4.4b - h=366cm

szt. 1

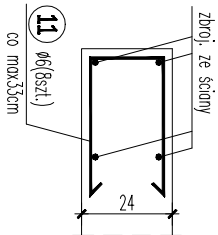


Poz.15.4.5c - h=248/254cm

szt. 2



RN2 - szt.16



Poz.	szt.	Lp	Stal #1	Ilość		Długość łączna [m]		# 12	# 16	# 20
				w elem.	razem	A-0	A-III			
15.1	4	1a	20	3.44	6	4	24			
		1a	8	1.52	16	4	64			82.56
2	2	16	3.44	10	1	10				
		2a	8	1.12	18	1	18			34.40
15.2	1	2b	8	1.22	18	1	18			
		2c	6	1.74	9	1	9			
		2d	6	1.64	18	1	18			
15.3	1	3a	16	3.34	4	1	4			
		3a	8	0.90	20	1	20			13.36
15.3.1a	3	3	16	3.34	4	4	16			
		3	6	1.48	18	4	72			53.44
15.3.1b	2	3b	8	0.90	20	2	40			
		3b	6	1.48	27	2	54			
15.4.1a	1	3a	8	0.90	26	1	26			
		3b	6	1.48	12	1	12			17.64
15.4.1b	1	3a	8	0.90	26	1	26			
		4a	6	1.74	12	1	12			17.64
15.4.1c	1	3a	8	0.90	26	1	26			
		3b	6	1.48	24	1	24			17.64
15.4.1d	4	4	12	4.41	4	1	4			
		3a	8	0.90	26	1	26			17.64
15.4.1b	1	3a	8	0.90	26	1	26			
		4a	6	1.74	36	1	36			62.64
15.4.1c	3	6	12	4.41	4	3	12			
		6a	8	1.02	26	3	78			52.92
15.4.1d	7	16	3.34	4	1	4				
15.4.1a	1	3a	8	0.90	22	1	22			13.36
		3b	6	1.48	6	1	6			
15.4.1b	8	16	4.48	4	1	4				
		3a	8	0.90	27	1	27			17.92
15.4.1c	1	3a	8	0.90	27	1	27			
		3b	6	1.48	3	1	3			4.44
15.4.1d	9	12	3.27	4	2	8				
15.4.1a	2	3a	8	0.90	19	2	38			26.16
		3b	6	1.48	27	2	54			
15.4.1b	9	12	3.27	4	1	4				
15.4.1c	1	9a	8	1.22	19	1	19			13.08
		9b	6	1.80	18	1	18			
15.4.1d	10	10	12	4	2	8				
15.4.1a	2	3a	8	0.90	19	2	38			0.00
		3b	6	1.48	18	2	36			
15.4.1b	10	10	12	4	2	8				0.00
15.4.1c	2	3a	8	0.90	19	2	38			
		3b	6	1.48	27	2	54			
15.4.1d	16	11	6	1.00	8	16	128			
Długość wv średnic [m]				755.30	608.44	162.17	159.20	82.56		
Masa 1 m pręta [kg/m]				0.222	0.395	0.888	1.578	2.466		
Masa łączna wv średnic [kg]				167.64	240.08	144.47	251.27	203.61		
Masa łączna wv gruntu stali [kg]				401.72			599.34			
							1007.06			